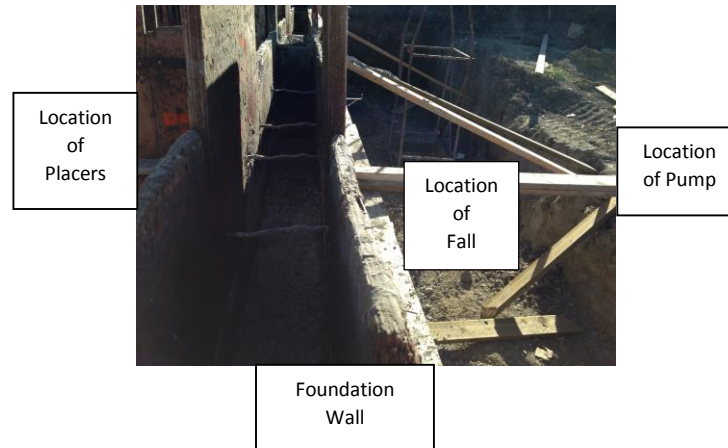


SERIOUS EVENT REVIEW

Event date: October 2015

Worker Fall Due To Unsafe Site Access Practice



While pumping concrete on the inside of the foundation of a new building. The foundation wall blocked the concrete pump operator's view of the placers. The pump operator walked across an access plank to the edge of the foundation wall for a better view of the concrete placers. The plank broke causing the pump operator to fall approximately 4 feet onto the broken plank hurting his arm. This resulted in bruising and soreness although could have resulted in a broken bone or worse.

Immediate Cause:

Inadequate access procedure

-pump operator accessed the wall using a 2x6 pressure treated board.

Contributing Factors:

Inadequate sight lines

-foundation wall blocked pump operator's view of placers.

Corrective and Preventative Actions:

Follow up with pump-operator company to ensure that an access procedure is developed or instructions for not accessing the wall are confirmed. Share concrete supplier firm's procedures for accessing foundation walls.

Follow up with placers and pump-operator company to ensure that a communication method is developed between the placers and the pump operators when pour is not visible to the operator.