

## ALBERTA READY-MIXED CONCRETE ASSOCIATION

### PRESIDENTS MESSAGE

As construction slows into winter mode and the Christmas season approaches, I join the ARMCA Board and staff in wishing you all peace, joy, hope, and happiness for the upcoming holiday season and throughout the New Year. The recent passing of our good friend, fair competitor, and strong ARMCA supporter, Tom Caruso, serves to remind us all of the importance of family and appreciating the many blessings in our lives. Our thoughts and prayers are with Tom's loved ones.

Our joint Lobby Day on Parliament Hill went ahead as planned even though it was scheduled for the week following the Ottawa shootings. It was moving to see the outpouring of support at the National War Memorial and surreal to see the bullet holes in several locations in Center Block of the Parliament Buildings. The Cement Association of Canada (CAC) and the Canadian Ready Mixed Concrete Association (CRMCA) hosted an MP reception on the Hill and held several individual meetings with MP's to raise awareness and discuss issues related to our industries. The CAC is to be commended for their efforts in creating national exposure to the many benefits and uses of concrete. We need to continue to work together to create messaging that maximizes the benefits of this exposure.

The CRMCA biennial meeting was held in conjunction with the Lobby Day and was highlighted by discussions on Environmental Product Declarations (EPD's), Product Category Rules, LEED version 4, CANPav, CSA Standards updates, Supplier Product Verification, Business Development initiatives, and other issues brought forward by the provincial associations.



Norm Kuntz - President

### INSIDE THIS ISSUE...

Presidents Message	1
ARMCA Board Members	4
News	4
Tools Available	6
WOC	6
CSA Highlights of Changes	7
September Golf Recap	8
Health Matters	10
Workplace Safety	11
Cold Weather Concrete	13
Save The Date	15
Nominations for Board of Directors	16
Advertising Opportunity	17

### Advertisers:

Glover International Trucks	10
Mezintel Inc.	5
New West Freightliner	3
Nortrux Inc.	12
Rogers Insurance	2
Rogers Insurance	9

ARMCA was also well represented at a CAC sponsored table at the recent Premier's Dinner in Red Deer. Infrastructure spending will keep Government as a major customer and an ever tightening regulatory environment adds importance to the contacts developed in these venues.

The ARMCA Board and Staff recently held a strategic planning session to ensure the association goals and activities continue to provide maximum value for our members. ARMCA continues to build on a sound financial base to offer more technical and training support, industry representation at a provincial and national level, networking opportunities, and increased lobby efforts for the benefit of our members and industry. Our Executive Director, Laura Reschke, has informed the Board of her intention to leave her position following our next AGM in May 2015. Laura has done an outstanding job providing professional representation, actively pursuing the goals set out by the Board, and improving the operational management of the association. The Board is reviewing the future direction of the association, determining the skill sets required, and will be posting the position in the New Year. Please give consideration to anyone in your network that could be a strong candidate.

Best wishes for a wonderful Holiday Season and a very Happy New Year!

Norm Kuntz  
ARMCA President



**ARMCA MEMBERS CAN  
SAVE MONEY ON HOME &  
AUTO INSURANCE**

You are already a Rogers Insurance Group Home & Auto Program member.  
Call or go online for a free quote and start saving!

**1.844.438.4768**  
**[rogersinsurance.ca/getgroup](http://rogersinsurance.ca/getgroup)**

For more information, contact:  
**JILL CARBERRY**  
Business Development Specialist  
[jcarberry@rogersinsurance.ca](mailto:jcarberry@rogersinsurance.ca)





- ✓ Stone slingers
- ✓ 12m & 13m trailer mixers
- ✓ Gravel units
- ✓ Heavy spec tractors

## **FULL SERVICE HEAVY TRUCK DEALERSHIP**

Call A.E. (Tony) Lidstone  
403.660.2373

[tony.lidstone@newwesttruck.com](mailto:tony.lidstone@newwesttruck.com)

### **LETHBRIDGE**

1001-41ST STREET N  
LETHBRIDGE, AB, T1H6J3  
Phone: 403.327.7611

### **MEDICINE HAT**

807-23RD STREET SW  
MEDICINE HAT, AB, T1A8T7  
Phone: 403.526.8332

### **CALGARY**

5925-79TH AVE SE  
CALGARY, AB, T2C5K3  
Phone: 403.569.4800



## ARMCA BOARD OF DIRECTORS - 2014/2015

### OFFICERS

PRESIDENT	NORM KUNTZ	BURNCO Rock Products Ltd
FIRST VICE-PRESIDENT	KRIS LASEK	Lafarge Canada Inc.
SECOND VICE-PRESIDENT	STEVE STREET	D & M Concrete Products Ltd.
SECRETARY / TREASURER	KELLY HINES	Knelsen Sand & Gravel
PAST-PRESIDENT	BILL SHAW	Inland Concrete

### DIRECTORS

CURTIS BOUTEILLER	Proform Concrete Services
LEN CHINSKI	Lafarge Canada Inc.
CLAYTON FORTH	BASF Admixtures Inc.
STEVE SCHIMPF	Inland Concrete
MARK LANGEN	Interstar Pigments
BRIAN TKACHUK	A & T Construction & Transit Mix Ltd.
PRASHANT VATS	Inland Concrete
JUSTIN ARNOTT	Cement Association of Canada

### JOB POSTINGS

Working within the concrete industry provides a vast range of occupations. From the inception of the mix to the final stage of the product, there are many opportunities for employment. **MEMBERS; advertise your job postings on the ARMCA website.** Send your postings to [info@armca.ca](mailto:info@armca.ca).

### NEWS

# BURNCO



Michael Powell, CA



Wil Fedirko, P.Eng



Kim Titus, CET



Clifford Hahne



Neil O'Connor



Scott Burns, Chairman of the Board of BURNCO Rock Products Ltd, is pleased to announce the following recent appointments:

**Michael Powell, CA** Chief Executive Officer

Mr. Powell has over twenty years of experience in the construction materials industry. Mike has served for the past four years as BURNCO's President and now has overall responsibility for BURNCO's operating, administrative and corporate functions.

**Wil Fedirko, P.Eng** Chief Operating Officer

Mr. Fedirko has been an employee of BURNCO for the past thirty-four years and served most recently as Senior Vice President and Vice President, Ready Mix Division. Wil is responsible for all of BURNCO's operating activities in Canada and the USA.

**Kim Titus, CET** Senior Vice President and Vice President, Aggregate Division  
Mr. Titus is a thirty-five year employee of BURNCO and will continue to lead BURNCO's Canadian Aggregate Division as well as BURNCO's newly-formed Environmental Responsibility Committee.

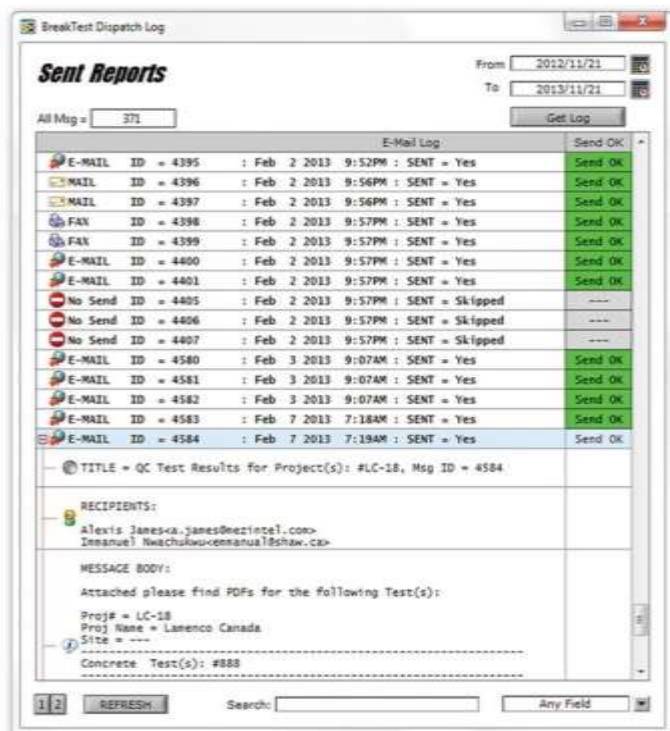
**Clifford Hahne** Vice President, BURNCO USA

Mr. Hahne holds a B.S. in Mechanical Engineering from the University of Texas at Arlington and has extensive experience in the Aggregate and Ready Mix industry in the USA and Australia. Clifford will lead BURNCO's US operations and is based in the Dallas/Fort Worth area.

**Neil O'Connor** Vice President, Ready Mix Division

Mr. O'Connor was promoted from the position of Regional Manager, Ready Mix Division and will lead BURNCO's Canadian Ready Mix operations. Neil has been with BURNCO since 2008.

BURNCO is a 102 year old, fourth generation aggregate construction materials business with over sixty locations in Alberta, British Columbia, Saskatchewan and Texas. A family business based in Calgary, BURNCO produces high quality aggregates, paving asphalt and ready mix concrete and also operates a network of retail landscape centres.



**After all, its the test results that really matter.**

Repetitive materials testing process demands attention and care to achieve accurate results. In the end, do you properly maintain and submit these results on time?

BreakTest automates the tedious tasks of reporting such as signing, collecting, organizing, archiving and emailing reports, so that you can dispatch test results weeks earlier!

**Contact us to start today!**

403-612-1849 • [info@mezintel.com](mailto:info@mezintel.com)

**Mezintel**



Watch demo videos on YouTube.  
[youtube.com/mezintel](http://youtube.com/mezintel)

**BreakTest 3.0**  
for Soils & Concrete Testing

## TOM CARUSO – OBITUARY



Tom Caruso of Noble Concrete (1987) Ltd. passed away surrounded by his loving family on November 27, 2014 at the age of 59. Tom was an active member of ARMCA and had served on the Board of Directors and was President of the Association in 2004. Our thoughts and prayers go out to his family and friends.

“In Tom’s last weeks he told his wife and kids, “My life has been just perfect. I wouldn’t change a thing.” While no amount of time with Tom would have ever been enough, he made a huge impact on his family, friends and community, and will forever be remembered in the hearts of all the lives he touched.”

...The Lethbridge Herald

## TOOLS AVAILABLE ON THE ARMCA WEBSITE

### MEMBERS, ARE YOU AWARE OF THE TOOLS AVAILABLE ON THE ARMCA WEBSITE?

<b>Concrete Calculator:</b>	Access an online calculator to determine approximate volume needed.
<b>Evaporation Loss Table:</b>	Avoid plastic shrinkage cracking
<b>CANPav Application:</b>	Cost Comparison Tool; understand your projects real cost of ownership. You can quickly conduct numerous “what if” scenarios comparing the initial constructions costs of both concrete and asphalt paving materials and save on projects.
<b>Impact Estimator:</b>	Buildings Lifecycle Assessment software is now available and free of charge. Includes the ability to import a bill of materials from CAD or other sources, enhanced extra materials input form, new assemblies, new materials and more!
<b>Weather Table:</b>	Access the Government of Canada Weather Office

These tools can all be accessed from your smart phone. Go to [www.armca.ca](http://www.armca.ca), click on the “Members” tab and select “Tools”.



Las Vegas 2015

Seminars Feb 2-6, 2015

Exhibits Feb 3-6, 2015

The World of Concrete Attendee Registration opened the week of September 29th, 2014. This unique registration link will give you the Exhibits Only (\$20 value) admission discount via online registration:

<https://www.worldofconcrete.com/Attendee/RegForm?PromoCode=A12>

Please note that some restrictions may apply. When you use this link, it will automatically place the source code in the box of the first page of registration.

## CANADIAN STANDARDS ASSOCIATION

The 12th edition of the Canadian Standards Association (CSA) A23.1.2.-14 is now available for purchase.

These Standards are part of the CSA A23 series on concrete, and supersede all previous editions.

Some of the highlights are:

- The ability to use blends of Portland-limestone cement and supplementary cementing materials for sulphate-classes of exposure (S-1, S-2, and S-3). Such cementing materials are to be used with well-defined compositional and testing requirements, as outlined in Clause 4.1.1.6.2 and Tables 2, 3 and 7. This change follows upon the introduction of Portland-limestone cements in the 2009 A23.1 edition.
- Refinement of the treatment of residential concrete (R classes of exposure), which is now integrated into the main tables (Tables 1 and 2), and improvements to the requirements of such concretes have been adopted (Table 2). This change follows upon the initial adoption of R class concretes into A23.1 in the 2009 version of this Standard. The reader's attention is drawn to Note 1 of Clause 9.1.
- Clarification of the various responsibilities for those involved in concrete construction are given within Clause 4, it also includes provision for the option to optimize the gradation of the entire aggregate component (coarse and fine combined). A new Annex Q outlines a simple method to optimize combined aggregate gradation.
- More specific instructions concerning concrete temperature limits and construction requirements for cold- and hot-weather concreting are contained within Clause 7.
- Within Clause 8, new sections deal with controlled low-strength material and shotcrete.
- Two new exposure-classes of concrete are defined in Tables 1 and 2: N-CF class pertains to interior concrete floors with a steel-trowel finish and A-XL, similar to the C-XL class, is for structurally reinforced concrete exposed to manure or silage gases or both. Other significant modifications to the technical requirements of the various exposure classes can be found in Table 2.
- New Annex O on aggregates made from recycled concrete for use in hydraulic cement concrete has been added.
- New Annex P provides information on the impact of sulphides in concrete aggregates on concrete behavior.
- New Annex R provides guidelines for residential concrete construction. This Annex reinstates much of the construction guidance previously found in the CSA A438 standard, which has been withdrawn.
- For CSA A23.2, there has generally been an extensive review, restructuring, and modernization of this Standard to provide a consistent suite of relevant test methods.
- Two new test methods have been added to CSA A23.2: A23.2-22C, Scaling resistance of concrete surfaces exposed to deicing chemicals using mass loss, and A23.2-23C, Electrical indication of concrete's ability to resist chloride ion penetration.

Hard copies of the 12th edition will be available through the ARMCA office for \$235.00 + GST + S&H.

Email: [info@armca.ca](mailto:info@armca.ca) or phone: 780-436-5645

To order your PDF copy of A23.1-14/A23.2-14 use this link:

<http://shop.csa.ca/en/canada/concrete/a231-14a232-14/invt/27012102014>

Use the promotion code "RMCAA15" to receive a 15% discount until October 31, 2015 (applicable to sku numbers 2422731 & 2021436 only).

## SEPTEMBER 4, 2014 GOLF TOURNAMENT RECAP



The 24th Annual Golf Classic in Lacombe, Alberta took place on September 4, 2014 with 37 teams participating. The morning started off with a hot breakfast in the club house where golfers had the opportunity to be involved in the horse race! Rick and Ed where undulated in a flurry of last minute bids before everyone head out for the shot gun start. The day finished with a hearty steak BBQ at the clubhouse and prizes were awarded!

The winners of the golf tournament and the team that will have their names engraved on the "Rick Turpin Trophy" were Steven Schimpf and Chris Thorne from Inland Concrete, Fort McMurray for the second year in a row!

2<sup>nd</sup> place      Ron Schimpf and Rick Boulay (Inland Concrete)  
3<sup>rd</sup> place      Brian MacNeil and Ben Servais (Kryton International Inc.)

### THANK YOU TO BURNCO ROCK PRODUCTS LTD FOR SPONSORING HOLE PRIZES:

Hole # 1    Longest Drive was won by Matthew Kerley (Inland Concrete)  
Hole #10   Closest to the Pin in 2 was won by Curtis Bouteiller (Proform Concrete Services)  
Hole # 15   Longest Putt was won by Ron Schimpf (Inland Concrete)  
Hole # 18   Longest Drive was won by Brad Gammill (Lafarge Canada Inc.)

### THANK YOU TO OUR PRIZE SPONSORS!

Glover International Trucks  
Kryton International Inc.  
Nortrux Inc.  
Stahl PeterBilt

**Thank you to all that participated in the 24<sup>th</sup> Annual Golf Classic and to those  
that provided extra prizes!**







**Rogers Insurance is a proud ARMCA member and our Surety Department is ready to deliver the bonds you need with competitive premiums.**

**Contact one of our Surety Account Executives to get started on your next project.**

**GREG E. GREBINSKI**

Senior Account Executive  
Construction Practice

**Direct** 403.476.4473

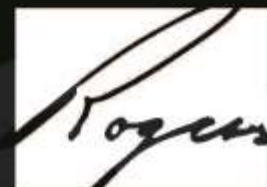
[ggrebinski@rogersinsurance.ca](mailto:ggrebinski@rogersinsurance.ca)

**LINDSAY SCOTT**

Account Executive  
Construction Practice

**Direct** 403.476.4453

[lscott@rogersinsurance.ca](mailto:lscott@rogersinsurance.ca)



**[rogersinsurance.ca](http://rogersinsurance.ca)**

**ROGERS**  
INSURANCE LTD.

## A REMINDER OF HOW TO STAY HEALTHY OVER THE HOLIDAYS

It's that time of the year again when we're running around burning the candle at both ends to get ready for that Holiday Break. But what lurks around every corner are the cold and flu viruses. Some of us may choose to get a flu shot which may give our immune systems a kick start but it won't prevent us from getting colds or the flu.

Our best lines of defense are still:

- 1) Very diligent hand washing and cleaning of common contact surfaces
- 2) Avoiding touching our faces with our hands
- 3) Keeping consistent sleep schedules
- 4) Eating healthy balanced meals
- 5) Getting regular exercise
- 6) Staying hydrated

If you do fall ill, look after yourself. Get the rest you need and deserve, and be considerate of others around you who do not want to fall victim to the same fate.

For more information on how you can reduce your chance of getting colds or the flu go to:

<http://www.hc-sc.gc.ca/hl-vs/iyh-vsv/diseases-maladies/hands-mains-eng.php>

<http://www.phac-aspc.gc.ca/phn-asp/2014/flu-grippe-1022-eng.php>

<http://healthycanadians.gc.ca/diseases-conditions-maladies-affections/disease-maladie/flu-grippe/index-eng.php>

Finally, be safe. Don't take unnecessary risks over the holidays. We want you all here in 2015 to share in the success we've enjoyed as an industry and family over the past several years.

And let's not forget to reach out to those who may not have been as fortunate in 2014 and who may need some reassurance to cope with the stresses that come at this time of year.

**Enjoy a safe and happy holiday break with plenty of good health and cheer!**



Calgary 1-888-723-6767

Red Deer 1-800-662-7186

Airdrie 1-403-948-2011

Camrose 1-800-232-1947

Drumheller 1-866-242-7232

Rocky Mtn House 1-403-845-4879

Brooks 1-403-501-5687

Medicine Hat 1-403-548-6444

Taber 1-403-223-3563

**GLOVER**

**INTERNATIONAL**

**TRUCKS**

[www.Glover-Ace.com](http://www.Glover-Ace.com)

## EVERYDAY WORKPLACE COMMON SENSE PRACTICES:

Many of our everyday workplace practices are aimed at preventing immediate health and safety incidents and concerns. Long term effects of our work environment upon our health can often be reduced substantially through subtle changes in our daily work habits. One workplace health issue that Alberta Occupational Health & Safety (OH&S) have been looking at more closely is the exposure of workers to crystalline silica. Crystalline silica dust particles can be small enough (<4µm) to be inhaled into the lungs ("respirable") and can cause a number of health problems including Silicosis, Chronic Obstructive Pulmonary Disease, Emphysema and even Lung Cancer.

Crystalline Silica is prevalent in many areas of our business from the raw materials like coarse aggregates and sands that go into making good quality concrete to the cement and fly ash powders that glue everything together. From hauling, washing and screening operations to loading and unloading bulkers; every time we pick up a broom and dry sweep creating a cloud of dust, we subject ourselves to the potential exposure to crystalline silica. In some instances we don the appropriate personal protective equipment (PPE) to protect our lungs but then we undo all of that benefit when we clean ourselves off with an air hose after removing our dust masks. Many of our industrial sites have engineered dust control and capture systems in place but many do not. Aside from having these provisions in place, many of us could reduce our exposure to all forms of dust including crystalline silica through increasing our awareness of the consequences of some of our actions and subsequently adjusting our approaches to our daily work tasks.

Simple changes in our old habits can go a long way to preserve our long term health.

- 1) Avoid using dry sweeping and leaf blowers to clean up dirty areas. Use vacuum systems equipped with HEPA Filters only.
- 2) Don't use loaders without cab enclosures or without using proper fit-tested respiratory PPE.
- 3) Maintain Dust collection systems for receiving cementitious materials and for batching concrete.
- 4) Use dust suppressants (even water trucks or water sprinklers) diligently to keep fugitive dust down in the yard. However be sure that this action fits in with your site's environmental management plan.
- 5) Have a robust dust management plan in place at any aggregate extraction or processing (screening/crushing/washing/recycling) site.
- 6) The same measures should be in place if you recycle hardened concrete at your facility.
- 7) All ready mix truck drivers should keep their windows closed at all times whenever they're on plant property to reduce their exposure to all sources of fugitive dust.
- 8) Any person involved in concrete cutting, coring, sandblasting, or mortar mixing should not only make provisions for their own personal health but also for those who could be impacted in the surrounding vicinity.
- 9) Every employer should have a dust exposure control plan in place and should instruct their employees in the use and maintenance of engineered dust control systems as well as the proper fitting and maintenance of dust masks and respirators.
- 10) If you're concerned about exposure to anything in your work environment, you should work with your employer to address it.

Recent studies by Alberta OH&S suggest that workers in our industry involved in specific tasks regularly find themselves working at Occupational Exposure Limits (OEL's) that far exceed OH&S's limit of 0.025 mg/m<sup>3</sup>. Employing the recommendations mentioned above can help our workers to reduce the likelihood of long term health effects from exposure to crystalline silica.





**SAVE THOUSANDS NOW** ON 2015 MODEL YEAR TRUCKS  
VERSUS 2016 MODEL YEAR



**In Stock and Arriving Soon:**

- 2015 Mack GU714 Tri-Drive with Automatic Transmission 2 in stock STK# 35233/36
- 2015 Mack GU714 Tandem Steer Tri-Drive 3 in stock STK # 35333/5
- 2015 Mack GU813 Tractor with London Tri-Axle Trailer Mixer in stock STK # 35347
- 2016 Mack GU714 Tri-Drive with Manual Transmission 2 on order STK # 35404/08



**John Stearns**

Cell: 780-718-5460  
Direct: 780-732-6333  
E-mail: [john.stearns@nortrux.com](mailto:john.stearns@nortrux.com)



**Edmonton**

Ph: 780-452-6225  
Toll-Free: 1-855-667-8789  
18110 – 118 Avenue NW

Nortrux has locations in  
Edmonton, Grande Prairie,  
and Red Deer

**MORE INVENTORY AT [NORTRUX.COM](http://NORTRUX.COM)**

**Grande Prairie**  
Ph: 780-532-1290

**Red Deer**  
Ph: 403-342-4187





## CONCRETE TECH TIP # 26

# Cold Weather Concrete

When the temperature begins to drop – and the predictions of chilling winds, ice and snow become a routine part of daily weather forecast – it is necessary to take a few extra precautions to ensure the best possible concrete project.

For the optimum results when concreting during cold weather – and to provide the proper conditions for strength gain and curing – it is important to observe certain guidelines.

**CSA Standard A23.1-09**

**“When the air temperature is at or below 5°C, or when there is a probability of the temperature falling below 5°C within 24 hours of placing (as forecast by the nearest official meteorological office), all materials and equipment needed for adequate protection and curing shall be on hand and ready for use before concrete placement is started.**

### 1. Planning

Have a pre-pour meeting and develop an action plan:

- Arrange for covering, insulating, housing or heating
- Have protection and curing equipment and materials on hand



- Schedule work so concrete placing can occur with the least delay
- Have sufficient manpower available
- Plan on proper curing

### 2. On Site

Concrete should never be placed on frozen ground as this may be the cause of settlement, set delays and frozen concrete. Thaw frozen ground; alternatively, excavate ground before freezing, then insulate.

## COLD WEATHER CONCRETE (continued)

Clear ice & snow from forms, reinforcement, and embedded steel, before placement. Schedule sufficient time to pre-warm surfaces before pouring concrete. Raising temperature of contact surfaces to that of concrete avoids thermal stresses.

CSA A23.1 notes that it is the responsibility of the Contractor to comply with cold weather concreting requirements and the Owners responsibility to verify. CSA A23.1-09 recommends: “Records should include the date, hour, and location of each determination. In cold weather, enclosure temperatures and concrete surface temperatures should be monitored.”

Concrete Producer

- Constituent materials (water, aggregates) can be heated.
- Concrete can be batched with a maximum water/cement ratio of 0.45 (i.e. use no more water than necessary for placing concrete.
- Superplasticizing concrete admixtures can be used if more workability is required.



CSA A23.1-09 suggests concrete should be protected from freezing until approximately 7 MPa is achieved. Concrete exposed to repeated freeze-thaw cycles should be designed to attain 32 MPa.

Methods for achieving faster set times or early strengths, and reducing the time protection is required include:

- Increase regular cement content, i.e. use a higher-strength concrete mix
- Add an appropriate accelerating concrete chemical admixture (non-chloride accelerators are required for reinforced concrete or in sulphate exposures).
- Use CSA Type HE/High Early strength cement

Notes: High concrete delivery temperatures will equal higher heat losses and more rapid slump loss. Higher-strength concrete will not add any benefit if the concrete loses heat before achieving the required strength.

### 3. Curing

When the temperature begins to fall:

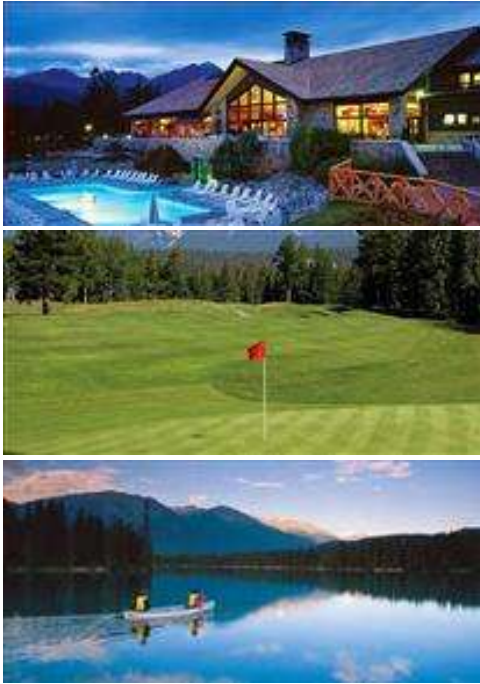
- Leave forms on as long as possible.
- Consider membrane curing on exposed concrete surfaces to avoid surface moisture loss
- Air temperature + 5° to - 5° Celsius: cover with insulated tarps to avoid concrete freezing.
- When the outside air temperature is below -5° Celsius: cool concrete gradually before removing insulation and exposing concrete surface to freezing outside air temperatures, to avoid thermal shock.
  - 1 °C/hour for sections over 1 m3
  - 3 °C/hour for thinner sections

References:

CSA A23.1-09

ACI 306 Guide to Cold Weather Concreting

# ARMCA AGM & CONVENTION



*The beautiful Jasper Park Lodge*

## SAVE THE DATE

**Don't miss this great event!**

We've made changes to our annual convention to include speakers, additional entertainment and golf on Saturday.

### Highlights include:

- Spousal activities
- Children's program
- Industry related speakers
- Dueling Pianos; a live, all request, high energy, "sing out loud" kind of event
- Hypnotic entertainment: a compelling and unforgettable interactive hypnosis performance that will have you laughing hysterically
- Karaoke evening

## May 7-9, 2015

Jasper Park Lodge, Jasper, Alberta



**ALBERTA READY-MIXED CONCRETE ASSOCIATION**

9653 – 45 Avenue Edmonton, AB T6E 5Z8

780-436-5645 | [info@armca.ca](mailto:info@armca.ca) | [www.armca.ca](http://www.armca.ca)

## NOMINATIONS FOR BOARD OF DIRECTORS

The Alberta Ready-Mixed Concrete Association needs your leadership, involvement, and support to remain a productive, creative and effective association. If you have the desire and the commitment to help shape our industry, we want to hear from you! The call for nominations for ARMCA's 2015-2016 **Board of Directors** is open. There are four (4) seats to be filled at the Annual General Meeting on May 8<sup>th</sup>, 2015:

Independent Producer (2 positions) 3 year term

Independent Producer (1 position) to complete the 3<sup>rd</sup> year of a 3 year term

Associate Member (1 position) 3 year term

### The Nomination Process for the ARMCA Board of Directors

ARMCA's bylaws can be found on the association's website at: <http://www.armca.ca> under the "members only" section.

As outlined in the bylaws, ARMCA can have a maximum of 13 Directors on the Board. Directors serve a term of 3 years and shall be eligible for re-election if otherwise qualified. The terms of the Directors are staggered so that three new Directors shall be elected each year; plus however many are required to replace Directors who may for any reason have left the Board prior to the expiration of their term. In most cases, Directors spend at least one term on the Board before joining the Executive Council. The normal progression for positions on the Executive Council of the Board is one year in each term, as the Directors progress through Second Vice-President to Vice-President to President to Past-President.

Any voting member of ARMCA, in good standing, may stand for nomination to the Board of Directors by either:

1) Completing the Nomination & Consent Form (below) and sending it to the ARMCA office prior to the AGM.

2) Attending ARMCA's AGM on May 8, 2015 in Jasper, AB and being nominated from the floor.

The majority of board meetings are located in Red Deer, Alberta. Directors are responsible for their own travel costs to attend meetings.

### ARMCA Nomination and Consent Form - Candidate for 2015-2016 Board of Directors

Name	Title	
Company	Mobile	Email

I, \_\_\_\_\_, HEREBY CONSENT to my nomination as a candidate for election to the Board of Directors for the Alberta Ready-Mixed Concrete Association and agree to stand for election and to serve as a Director for the designated term, if elected. I understand that being a member of the Board of Directors will involve being a voting member of the association, attending Board meetings and becoming involved in association committee activities, as required. If elected, I agree to carry out my duties to the best of my abilities. I wish to be considered for the following category:

☐

Independent Producer

☐

Associate

☐

Affiliate

Signature: \_\_\_\_\_ Date: \_\_\_\_\_

**Only nominations received by April 17, 2015 will be included on the preprinted election ballot in the convention program.**

**Names received after April 17, 2015 will be added to the election ballot from the floor at the AGM.**

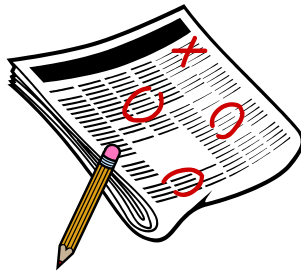
**Please email your completed form to [info@armca.ca](mailto:info@armca.ca) or fax it to 780-436-6503.**



## ADVERTISING OPPORTUNITY FOR ARMCA MEMBERS

### THE MIXER

#### The Quarterly Newsletter of the Alberta Ready-Mixed Concrete Association



Make sure your advertising dollars hit the target. If concrete is your target market, then there isn't a better bang for your advertising buck than to advertise in the Alberta Ready-Mixed Concrete Associations' "The Mixer." In addition to reaching our membership and various stakeholders, the newsletter with your advertisement is accessed by over 1,500 people per month on the website and will remain on-line for at least two years so your advertisement will still be viewed long after the publication has been sent.

Full page	6¼" wide x 8¼" high	\$300 + GST
Half Page	6¼" wide x 4¼" high	\$200 + GST
Quarter Page	3½" wide x 4¼" high	\$150 + GST
Business Card		\$100 + GST

If you would like to place an advertisement in the "The Mixer", please forward your high resolution PDF advertisement to the Alberta Ready-Mixed Concrete Association (ARMCA) Office.

**Alberta Ready-Mixed Concrete Association**

**9653 – 45 Avenue**

**Edmonton, AB T6E 5Z8**

**Phone: 780-436-5645 Fax: 780-436-6503 email: [info@armca.ca](mailto:info@armca.ca)**

ON BEHALF OF THE ARMCA BOARD OF DIRECTORS AND STAFF:



*Laura Reschke*

*Ed Kalis*

*Paul Masson*

*Cheryl Grisé*